

# Horns and Sounders

The MEDC range of horns and sounders are suitable for a wide variety of applications and feature a variety of tone settings and traditional bells.

Sounders and Horns are used to warn of potentially dangerous situations or to relay instructions. In addition the alarms may operate as stand-alone units or be incorporated into a hazard warning system. A wide variety of sound output levels and other options are also available. The Sounders and Horns output in dB(A) is measured to European standards at 1 metre.



## Range Certifications

PRODUCT	ATEX	IECEX	UL	ULC	CSA	Inmetro	CUTR	CQST	ABS	SIL	IP Rating	Page
<b>Horns &amp; Sounders</b>												
DB1	■	■	■			■	■				66	68
DB3B	■	■									66 / 67	70
DB3	■	■	■	■		■	■	■	■	■	66 / 67	72
DB3V	■	■				■	■	■			66 / 67	74
dEV 20	■	■									66	76
DB5	■	■			■	■			■		65	78
DB7	■						■				66 / 67	80
DB12											66 / 67	82
DB15											66 / 67	84
DB6	■	■				■					65	86
dGW21/dRGW21	■		■				GOST				66	88



DB1



DB3



DB3V



DB3B



DB3B (short flare)



dEV 20



DB5



DB7



DB12



DB15

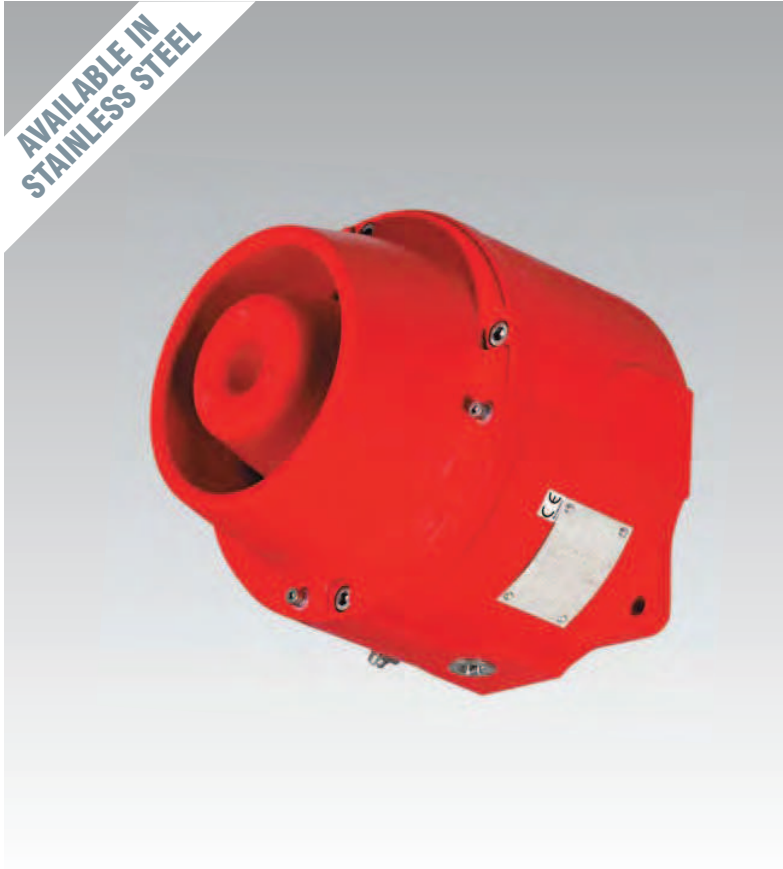


DB6



dGW21

## Ex d, Weatherproof



### Introduction

This range of lightweight, flameproof Sounders have been designed with a high weatherproof rating to cope with the harsh environmental conditions found offshore and onshore in the oil, gas and petrochemical industries.

Electronic circuitry allows the DB1P and DB1HP to be switched between two selectable tones by either reversing the supply polarity, or connecting a second voltage supply.

The higher output DB1H and DB1HP are particularly suitable for noisy environments.

Stainless steel, one of the most durable materials available on the market, is both hard wearing and corrosion resistant, increasing the life of products in harsh environments and therefore reducing maintenance costs.

### Features

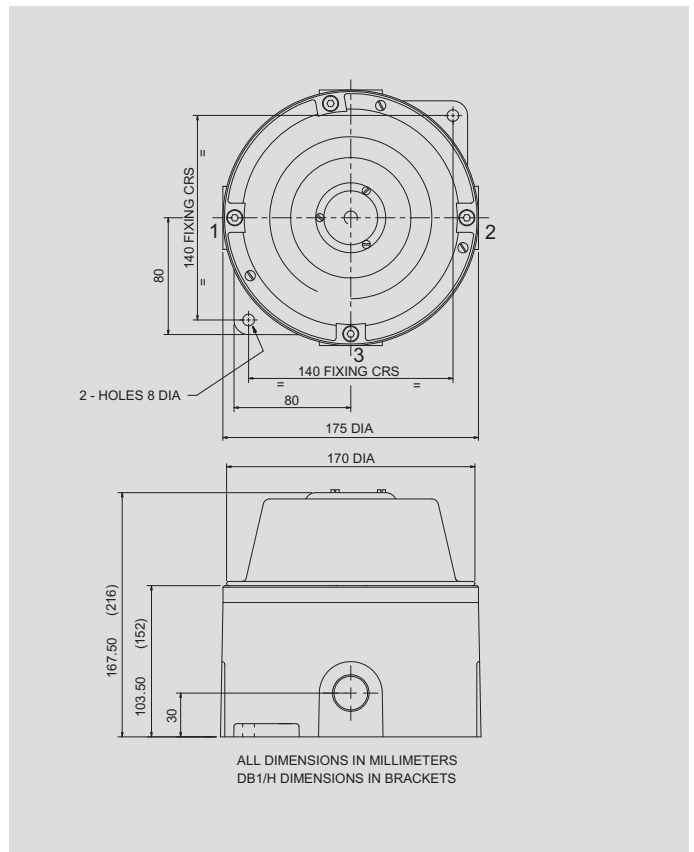
- Zone 1 and Zone 2 use.
- Ex d, IIB T5 /T6\*.
- ATEX approved, Ex II 2G.
- CENELEC approved, BASEEFA certified.
- UL Listed – Class I, Div 1. Groups C & D.
- IECEx certified, Gb.
- CUTR certified.
- Brazilian (Inmetro) certified.
- IP66.
- Certified temperature: –20°C to +70°C.
- Up to 113 dB(A) output.
- Available in marine grade alloy or stainless steel.
- 27 output tones, user selectable.
- Telephone initiate option.
- Tones can be selected remotely.
- Tones comply with UKOOA/PFEER guidelines.
- Any two tones may be switched via the external voltage supply.
- End of line resistor option.

*\*Model dependent.*



# Certification and Specification

<b>ATEX DB1P Ex d:</b>	Cert. no. BAS00ATEX0207X. Certified to: EN60079-0, EN60079-1. Ex II 2G, Ex d IIB T6.
<b>ATEX DB1HP Ex d:</b>	Cert. no. BAS00ATEX0209X. Certified to: EN60079-0, EN60079-1. Ex II 2G, Ex d IIB T5.
<b>IECEX DB1P Ex d:</b>	Cert. no. IECEX BAS 10.0065X. Certified to: IEC60079-0, IEC60079-1. Ex d IIB T6 Gb.
<b>IECEX DB1HP Ex d:</b>	Cert. no. IECEX BAS 10.0064X. Certified to: IEC60079-0, IEC60079-1. Ex d IIB T5 Gb.
<b>UL Haz Locs:</b>	Listing no. E187688. Class I, Div 1, Groups C & D.
<b>CUTR DB1P Ex d:</b>	1Ex d IIB T6 Gb.
<b>Inmetro DB1P Ex d:</b>	Ex d IIB T5/T6 Gb.
<b>Inmetro DB1HP Ex d:</b>	Ex d IIB T5/T6 Gb.
<b>Material:</b>	LM25 corrosion resistant alloy or ANC4B stainless steel with stainless steel cover screws. ABS flare.
<b>Finish:</b>	Epoxy paint finish as standard or to customer specification.
<b>Certified Temp:</b>	ATEX/CENELEC -20°C to +55°C (DB1 & DB1P). ATEX/CENELEC -20°C to +70°C (DB1H & DB1HP). UL -25°C to +70°C.
<b>Weight:</b>	DB1(P) 3.5 Kg Alloy, 8.3 Kg stainless. DB1H(P) 5.6 Kg Alloy, 12.7 Kg stainless.
<b>Ingress Protection:</b>	IP66.
<b>Entries:</b>	Up to 3 x M25 or M20 ISO.
<b>Terminals:</b>	Suitable to accept up to 4mm <sup>2</sup> cable. Note: Terminals limited to 2.5mm <sup>2</sup> cable on a.c. version with telephone initiate option only.
<b>Output:</b>	DB1(P)=103±3dB(A) (96±3dB(A) for 12V DB1). DB1H(P)=110 ± 3dB(A) @ 1 metre. Note: Sound level is dependent upon the tone selection.
<b>Labels:</b>	Tag and Duty labels optional.
<b>Tone Selection:</b>	Single Stage Unit a.c. 27 user selectable tones including, PFEER/UKOOA tones. Two Stage Unit d.c. Switchable between any two of the 27 tones by either: (i) Reversing the polarity of the supply, or (ii) By a 3 wire common +ve system, switching between the two - ve lines. Note: Reverse monitoring is achievable on Two Stage Version by selection of terminals.



## Current Consumption:

	DB1(P)	DB1H(P)
12V	125mA	900mA
24V	250mA	700mA
48V	250mA	350mA
120V	60mA	200mA
240V	50mA	100mA

## Ordering Requirements

The following code is designed to help in selection of the correct unit. Build up the reference number by inserting the code for each component into the appropriate box.

Model	Certification	Material	Voltage	Entries	Duty	Tag	Options	Finish																																																																																
DB1P DB1HP	<table border="1"> <thead> <tr> <th>Certification</th> <th>Code</th> </tr> </thead> <tbody> <tr><td>ATEX/CENELEC</td><td>B</td></tr> <tr><td>IECEX</td><td>J</td></tr> <tr><td>UL</td><td>UL</td></tr> <tr><td>CUTR</td><td>G</td></tr> <tr><td>Inmetro</td><td>DM</td></tr> <tr><td colspan="2">UL - Available Alloy only. - 12V d.c., 24V d.c., 48V d.c. 110V a.c. only.</td></tr> </tbody> </table>	Certification	Code	ATEX/CENELEC	B	IECEX	J	UL	UL	CUTR	G	Inmetro	DM	UL - Available Alloy only. - 12V d.c., 24V d.c., 48V d.c. 110V a.c. only.		<table border="1"> <thead> <tr> <th>Material</th> <th>Code</th> </tr> </thead> <tbody> <tr><td>Alloy</td><td>A</td></tr> <tr><td>Stainless Steel</td><td>S</td></tr> </tbody> </table>	Material	Code	Alloy	A	Stainless Steel	S	<table border="1"> <thead> <tr> <th>Voltage</th> <th>Code</th> </tr> </thead> <tbody> <tr><td>12V d.c.</td><td>012</td></tr> <tr><td>24V d.c.</td><td>024</td></tr> <tr><td>48V d.c.</td><td>048</td></tr> <tr><td>110V a.c.</td><td>110</td></tr> <tr><td>240V a.c.</td><td>240</td></tr> </tbody> </table>	Voltage	Code	12V d.c.	012	24V d.c.	024	48V d.c.	048	110V a.c.	110	240V a.c.	240	<table border="1"> <thead> <tr> <th>Entries</th> <th>Code</th> </tr> </thead> <tbody> <tr><td>M20</td><td>A</td></tr> <tr><td>M25</td><td>B</td></tr> <tr><td>1/2" NPT (UL Only)</td><td>C</td></tr> <tr><td>3/4" NPT (UL Only)</td><td>D</td></tr> <tr><td>LHS</td><td>*1</td></tr> <tr><td>RHS</td><td>*2</td></tr> <tr><td>Bottom</td><td>*3</td></tr> </tbody> </table>	Entries	Code	M20	A	M25	B	1/2" NPT (UL Only)	C	3/4" NPT (UL Only)	D	LHS	*1	RHS	*2	Bottom	*3	<table border="1"> <thead> <tr> <th>Duty</th> <th>Code</th> </tr> </thead> <tbody> <tr><td>None</td><td>N</td></tr> <tr><td>Required</td><td>D*</td></tr> </tbody> </table> <p>* Please specify wording.</p>	Duty	Code	None	N	Required	D*	<table border="1"> <thead> <tr> <th>Tag</th> <th>Code</th> </tr> </thead> <tbody> <tr><td>None</td><td>N</td></tr> <tr><td>Required</td><td>T*</td></tr> </tbody> </table> <p>* Please specify wording.</p>	Tag	Code	None	N	Required	T*	<table border="1"> <thead> <tr> <th>Options</th> <th>Code</th> </tr> </thead> <tbody> <tr><td>Not required</td><td>N</td></tr> <tr><td>Telephone Initiate</td><td>T</td></tr> <tr><td>Relay Initiate</td><td>R</td></tr> <tr><td>Remote Tone Select</td><td>S</td></tr> <tr><td>End of line resistor</td><td>E*</td></tr> </tbody> </table> <p>* State value.</p>	Options	Code	Not required	N	Telephone Initiate	T	Relay Initiate	R	Remote Tone Select	S	End of line resistor	E*	<table border="1"> <thead> <tr> <th>Finish</th> <th>Code</th> </tr> </thead> <tbody> <tr><td>Red</td><td>R</td></tr> <tr><td>Grey</td><td>G</td></tr> <tr><td>Special</td><td>S*</td></tr> </tbody> </table> <p>* Please specify.</p>	Finish	Code	Red	R	Grey	G	Special	S*
Certification	Code																																																																																							
ATEX/CENELEC	B																																																																																							
IECEX	J																																																																																							
UL	UL																																																																																							
CUTR	G																																																																																							
Inmetro	DM																																																																																							
UL - Available Alloy only. - 12V d.c., 24V d.c., 48V d.c. 110V a.c. only.																																																																																								
Material	Code																																																																																							
Alloy	A																																																																																							
Stainless Steel	S																																																																																							
Voltage	Code																																																																																							
12V d.c.	012																																																																																							
24V d.c.	024																																																																																							
48V d.c.	048																																																																																							
110V a.c.	110																																																																																							
240V a.c.	240																																																																																							
Entries	Code																																																																																							
M20	A																																																																																							
M25	B																																																																																							
1/2" NPT (UL Only)	C																																																																																							
3/4" NPT (UL Only)	D																																																																																							
LHS	*1																																																																																							
RHS	*2																																																																																							
Bottom	*3																																																																																							
Duty	Code																																																																																							
None	N																																																																																							
Required	D*																																																																																							
Tag	Code																																																																																							
None	N																																																																																							
Required	T*																																																																																							
Options	Code																																																																																							
Not required	N																																																																																							
Telephone Initiate	T																																																																																							
Relay Initiate	R																																																																																							
Remote Tone Select	S																																																																																							
End of line resistor	E*																																																																																							
Finish	Code																																																																																							
Red	R																																																																																							
Grey	G																																																																																							
Special	S*																																																																																							

\* Only available in DB1P

\* Prefix position with entry size code e.g. A1A3 = M20 left and bottom entries.

## Ex d(e), Weatherproof



### Introduction

The DB3B is a high power explosion proof sounder, introduced as a replacement for the current DB3 with improved functionality and performance. Certified for use in a wide range of temperatures from -55°C to +70°C the Ex enclosure is manufactured from GRP with a rugged thermoplastic flare providing a corrosion free and aesthetically pleasing product.

Capable of producing 125dB @ 1m and with a range of pre-recorded tones, the DB3B includes an integral volume control which is ideal when a lower output is required.

The unit is provided with versatile control options allowing compatibility with a wide range of control methods and PLCs. The standard DC unit provides 3 tone stages, each stage has 28 tones available which can be independently selected. The unit can be controlled by reversing the polarity of the power supply (2 stage) or providing a common negative and switching between multiple positive supplies. The DB3B proves its versatility by additionally being able to work with a common positive supply and switching the negatives. The tone stages of the DB3B can also be controlled via voltage free contacts provided by a control panel.

The flexibility of the range continues with a wide range of supply voltages. The short flare option is worthy addition to the range offering a high SPL in a compact unit.

### Features

- Ex d / Ex de IIC/IIIC T4/T5/T6.
- ATEX certified.
- IECEx certified.
- Certified temperature -55°C to +70°C.\*
- IP66 & IP67.
- Optional Ex e terminal chamber.
- Up to 125dB output @ 1m.
- Integral volume control.
- 28 tones, user selectable.
- 3 stage unit remotely switchable.
- Tones can be programmed to customer's specification.
- DC supply voltage between 12V and 48V.
- End of line resistor option.
- Sounder & beacon combination units available, for further details contact MEDC.
- Ex enclosure - Glass reinforced polyester.
- Flare - High impact thermoplastic polyester.
- Stainless Steel mounting bracket and cover screws.
- Mounting bracket has ratchet facility as standard.
- Optional swivel bracket available.

*\*Model Dependent.*



Short Flare Version

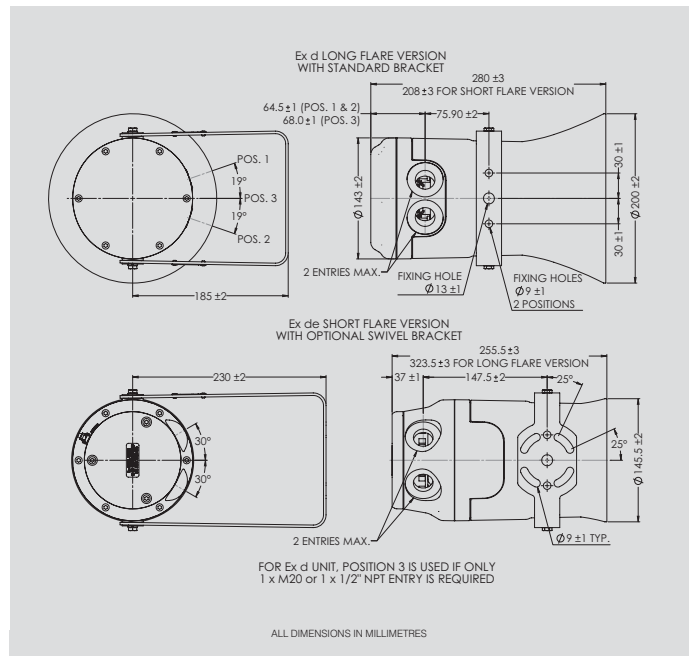


# Certification and Specification

<b>ATEX Ex d Gas:</b>	Cert. no. Baseefa13ATEX0229X. Certified to: EN60079-0, EN60079-1. Ex II 2 G, Ex d IIC T4/T5/T6 Gb.
<b>ATEX Ex d Gas &amp; Dust:</b>	Cert. no. Baseefa13ATEX0231X. Certified to: EN60079-0, EN60079-1, EN60079-31. Ex II 2 GD, Ex d IIC T4/T5/T6 Gb, Ex tb IIIC T135°C/T100°C/T85°C Db, IP66.
<b>ATEX Ex de Gas:</b>	Cert. no. Baseefa13ATEX0232X. Certified to: EN60079-0, EN60079-1, EN60079-7. Ex II 2 G, Ex de IIC T4/T5/T6 Gb.
<b>ATEX Ex de Gas &amp; Dust:</b>	Cert. no. Baseefa13ATEX0233X. Certified to: EN60079-0, EN60079-1, EN60079-7, EN60079-31. Ex II 2 GD, Ex de IIC T4/T5/T6 Gb, Ex tb IIIC T135°C/T100°C/T85°C Db, IP66.
<b>IECEX Ex d Gas:</b>	Cert. no. IECEx BAS 13.0112X. Certified to: IEC60079-0, IEC60079-1. Ex d IIC T4/T5/T6 Gb.
<b>IECEX Ex d Gas &amp; Dust:</b>	Cert. no. IECEx BAS 13.0113X. Certified to: IEC60079-0, IEC60079-1, IEC60079-31. Ex d IIC T4/T5/T6 Gb, Ex tb IIIC T135°C/T100°C/T85°C Db, IP66.
<b>IECEX Ex de Gas:</b>	Cert. no. IECEx BAS 13.0114X. Certified to: IEC60079-0, IEC60079-1, IEC60079-7. Ex de IIC T4/T5/T6 Gb.
<b>IECEX Ex de Gas &amp; Dust:</b>	Cert. no. IECEx BAS 13.0115X. Certified to: IEC60079-0, IEC60079-1, IEC60079-7, IEC60079-31. Ex de IIC T4/T5/T6 Gb, Ex tb IIIC T135°C/T100°C/T85°C Db, IP66.

<b>Material:</b>	Ex enclosure - Flame retardant, UV stable, Glass reinforced polyester. Flare - Flame retardant, high impact, UV stable, thermoplastic polyester. (UV stability tested to ISO 4892 part 3). Hardware - Bracket, fixings and captive cover screws in 316 stainless steel.
<b>Fire retardancy:</b>	Body - Glass reinforced polyester. V0 flammability rating. Outer Flare - Thermoplastic Polyester. V0 flammability rating.
<b>Finish:</b>	Body - natural black. Flare - natural black, natural red or painted as specified. (Black short flare painted black).
<b>Voltage:</b>	DC: 12 - 48V AC: Up to 254V.
<b>Weight:</b>	Ex d - 4.6kg, Ex de - 5.4kg. Based on long flare DC unit.
<b>Ingress Protection:</b>	IP66 & IP67.
<b>Earth Continuity:</b>	Optional for Ex de version. Not available on Ex d unit.
<b>Entries:</b>	Up to 2 x M20 or 1/2" NPT. Blanking plug available.
<b>Terminals:</b>	AC: 7 x 2.5mm <sup>2</sup> (4 for loop in/out power, 3 for tone selection) (Standard unit only). DC: 8 x 2.5mm <sup>2</sup> (8 for loop in/out power and tone selection) (Standard unit only).
<b>Mounting arrangement:</b>	Stainless steel bracket with ratchet facility, optional swivel bracket available.
<b>Labels:</b>	Optional duty and tag labels available.
<b>Tone information:</b>	28 tones per stage. Additional custom tones available (contact MEDC).

<b>Maximum output dB @ 1400Hz:</b>		
<b>Flare type</b>	<b>Short</b>	<b>Long</b>
<b>IIC Gas</b>	122dB	125dB
<b>IIIC Gas &amp; Dust</b>	116dB	119dB
<b>Certified Temperature:</b>		
<b>Protection Type</b>	<b>Minimum Temp</b>	<b>Maximum Temp</b>
<b>Ex d</b>	-55°C	+70°C
<b>Ex de</b>	-50°C	



## Tone activation and selection:

Voltage	Unit	Number of stages	Stage activation	Tone selection	
DC	Standard	1	Apply power.	1 x DIP switch.	
		2	Apply power / Reverse polarity.	2 x DIP switches.	
			Common negative and switch between 2 positives.	2 x DIP switches.	
			Common positive and switch between 2 negatives.	2 x DIP switches.	
		3	Common negative and switch between 3 positives.	3 x DIP switches.	
			Common positive and switch between 3 negatives.	3 x DIP switches.	
AC	Volt free activation (remote).	1 - 5	Volt free activation (remote switching).	1 x DIP switch for stage 1. Tones preselected for subsequent stages.	
		Standard	1	Apply power.	1 x DIP switch
			1 - 2	Volt free activation (remote switching).	1 x DIP switch for stage 1. Tones preselected for subsequent stage.

## Current Consumption: Based on a continuous 970Hz tone.

Voltage	Current for IIC unit	Current for IIIC unit
12Vdc	700mA	716mA
24Vdc	329mA	339mA
48Vdc	171mA	173mA
110Vac	115mA	122mA
120Vac	106mA	113mA
220Vac	59mA	63mA
230Vac	52mA	55mA
240Vac	55mA	58mA
254Vac	59mA	63mA

## Ordering Requirements

The following code is designed to help in selection of the correct unit. Build up the reference number by inserting the code for each component into the appropriate box.

Model	Certification	Ex Atmosphere	Voltage	Labels	Entries	Options	Finish																																																																																												
DB3B																																																																																																			
	<table border="1"> <tr><th>Certification</th><th>Code</th></tr> <tr><td>ATEX Ex d</td><td>D</td></tr> <tr><td>ATEX Ex de</td><td>E</td></tr> <tr><td>IECEX Ex d</td><td>DJ</td></tr> <tr><td>IECEX Ex de</td><td>EJ</td></tr> <tr><td>Weatherproof</td><td>W</td></tr> </table>	Certification	Code	ATEX Ex d	D	ATEX Ex de	E	IECEX Ex d	DJ	IECEX Ex de	EJ	Weatherproof	W	<table border="1"> <tr><th>Ex Atmosphere</th><th>Code</th></tr> <tr><td>None</td><td>N*</td></tr> <tr><td>IIC Gas</td><td>G</td></tr> <tr><td>IIIC Gas &amp; Dust</td><td>GD</td></tr> </table> <p>* If Weatherproof select N for Ex Atmosphere</p>	Ex Atmosphere	Code	None	N*	IIC Gas	G	IIIC Gas & Dust	GD	<table border="1"> <tr><th>Voltage</th><th>Code</th></tr> <tr><td>12-48V d.c.</td><td>048</td></tr> <tr><td>110V a.c.</td><td>110</td></tr> <tr><td>120V a.c.</td><td>120</td></tr> <tr><td>220V a.c.</td><td>220</td></tr> <tr><td>230V a.c.</td><td>230</td></tr> <tr><td>240V a.c.</td><td>240</td></tr> <tr><td>254V a.c.</td><td>254</td></tr> </table>	Voltage	Code	12-48V d.c.	048	110V a.c.	110	120V a.c.	120	220V a.c.	220	230V a.c.	230	240V a.c.	240	254V a.c.	254	<table border="1"> <tr><th>Labels</th><th>Code</th></tr> <tr><td>None</td><td>N</td></tr> <tr><td>Duty</td><td>D</td></tr> <tr><td>Tag</td><td>T</td></tr> </table>	Labels	Code	None	N	Duty	D	Tag	T	<table border="1"> <tr><th>Entries</th><th>Code</th></tr> <tr><td>1 x M20</td><td>1B*</td></tr> <tr><td>2 x M20</td><td>2B</td></tr> <tr><td>2 x M20</td><td>2BP</td></tr> <tr><td>Inc 1 x plug</td><td></td></tr> <tr><td>1 x 1/2" NPT</td><td>1C*</td></tr> <tr><td>2 x 1/2" NPT</td><td>2C*</td></tr> <tr><td>2 x 1/2" NPT</td><td>2CP*</td></tr> <tr><td>Inc 1 x plug</td><td></td></tr> </table> <p>* Not available Ex e.</p>	Entries	Code	1 x M20	1B*	2 x M20	2B	2 x M20	2BP	Inc 1 x plug		1 x 1/2" NPT	1C*	2 x 1/2" NPT	2C*	2 x 1/2" NPT	2CP*	Inc 1 x plug		<table border="1"> <tr><th>Options</th><th>Code</th></tr> <tr><td>None</td><td>N</td></tr> <tr><td>Swivel bracket</td><td>B</td></tr> <tr><td>EOL</td><td>E*</td></tr> <tr><td>Volt free activation (remote)</td><td>R</td></tr> <tr><td>Short flare</td><td>S</td></tr> <tr><td>Custom tones (not std 28)</td><td>T†</td></tr> <tr><td>Earth cont.</td><td>G†</td></tr> </table> <p>* Specify value (Min 470Ω). † Ex e only. ‡ Specify details</p>	Options	Code	None	N	Swivel bracket	B	EOL	E*	Volt free activation (remote)	R	Short flare	S	Custom tones (not std 28)	T†	Earth cont.	G†	<table border="1"> <tr><th>Finish</th><th>Code</th></tr> <tr><td>Natural Black</td><td>N†</td></tr> <tr><td>Natural Red</td><td>R</td></tr> <tr><td>Yellow</td><td>Y</td></tr> <tr><td>Grey</td><td>G</td></tr> <tr><td>Blue</td><td>B</td></tr> <tr><td>Special</td><td>S*</td></tr> </table> <p>* Please specify. † Short flare painted black.</p>	Finish	Code	Natural Black	N†	Natural Red	R	Yellow	Y	Grey	G	Blue	B	Special	S*
Certification	Code																																																																																																		
ATEX Ex d	D																																																																																																		
ATEX Ex de	E																																																																																																		
IECEX Ex d	DJ																																																																																																		
IECEX Ex de	EJ																																																																																																		
Weatherproof	W																																																																																																		
Ex Atmosphere	Code																																																																																																		
None	N*																																																																																																		
IIC Gas	G																																																																																																		
IIIC Gas & Dust	GD																																																																																																		
Voltage	Code																																																																																																		
12-48V d.c.	048																																																																																																		
110V a.c.	110																																																																																																		
120V a.c.	120																																																																																																		
220V a.c.	220																																																																																																		
230V a.c.	230																																																																																																		
240V a.c.	240																																																																																																		
254V a.c.	254																																																																																																		
Labels	Code																																																																																																		
None	N																																																																																																		
Duty	D																																																																																																		
Tag	T																																																																																																		
Entries	Code																																																																																																		
1 x M20	1B*																																																																																																		
2 x M20	2B																																																																																																		
2 x M20	2BP																																																																																																		
Inc 1 x plug																																																																																																			
1 x 1/2" NPT	1C*																																																																																																		
2 x 1/2" NPT	2C*																																																																																																		
2 x 1/2" NPT	2CP*																																																																																																		
Inc 1 x plug																																																																																																			
Options	Code																																																																																																		
None	N																																																																																																		
Swivel bracket	B																																																																																																		
EOL	E*																																																																																																		
Volt free activation (remote)	R																																																																																																		
Short flare	S																																																																																																		
Custom tones (not std 28)	T†																																																																																																		
Earth cont.	G†																																																																																																		
Finish	Code																																																																																																		
Natural Black	N†																																																																																																		
Natural Red	R																																																																																																		
Yellow	Y																																																																																																		
Grey	G																																																																																																		
Blue	B																																																																																																		
Special	S*																																																																																																		

All specifications, dimensions, weights and tolerances are nominal (typical) and MEDC reserve the right to vary all data without prior notice. No liability is accepted for any consequence of use.



## Exd(e), Weatherproof



### Introduction

This range of lightweight all GRP, flameproof sounders is intended for use in potentially explosive gas and dust atmospheres and has been designed with high ingress protection to cope with the harsh environmental conditions found offshore and onshore in the oil, gas and petrochemical industries.

The flamepaths, flare and the body, are manufactured completely from a UV stable glass reinforced polyester.

Stainless steel screws and sinter are incorporated thus ensuring a corrosion free product. A tapered flamepath is used to overcome the problems of assembly of parallel spigot flamepaths.

An optional Exe terminal chamber is available.

An uncertified version is available for use in non-explosive atmospheres.

### Features

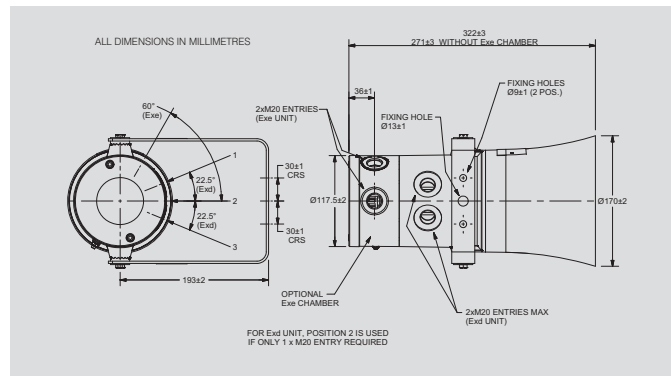
- Zone 1, Zone 2 and non-Ex use.
- Ex de IIC T4/T5.
- ATEX approved, EEx II 2GD.
- Optional Exe terminal chamber.
- IECEX certified Gb, Db.
- UL Listed for USA and Canada:
  - Hazardous locations:
    - Class I, Div 2, Groups A-D.
    - Class II, Div 2, Groups F & G.
    - Class I, Zones 1 & 2, AExd IIC T5.
  - Ordinary locations: Audible-Signal Device.
- ULC certified for Class I, Zone 1 AEx d IIC. Class I & II, Division 2.
- CUTR certified.
- Chinese (CQST) certified.
- Brazilian (Inmetro) certified.
- IP66 and IP67.
- SIL 1 Certified.
- Designed in accordance with EN54-3.
- \*Certified temperature: -55°C to +70°C.
- All GRP corrosion free flamepaths.
- Up to 118dB(A) output.
- Integral volume control.
- 27 tones, user selectable.
- Tones comply with UKOOA/PFEER guidelines.
- Two tones may be switched via the external voltage supply – now available in a.c. and d.c. versions.
- Tones may be programmed to customer specification.
- d.c. version accepts any voltage between 12V d.c. and 48V d.c.
- End of line resistor option.
- Sounder/Beacon Combination Unit available.

*\*Depending on version.*



# Certification and Specification

<b>ATEX EEx d:</b>	Cert. no. BAS00ATEX2097X. Certified to: EN50014, EN50018. Ex II 2GD, EEx d IIC T4/T5.
<b>ATEX EEx de:</b>	Cert. no. BAS00ATEX2098X. Certified to: EN50014, EN50018, EN50019. Ex II 2GD, EEx de IIC T4/T5.
<b>IECEX Ex d:</b>	Cert. no. IECEX BAS 11.0083X. Certified to: IEC60079-0, IEC60079-1, IEC60079-31. Ex d IIC T4/T5 Gb, Ex tb IIIC T100°C/T135°C Db.
<b>IECEX Ex de:</b>	Cert. no. IECEX BAS 11.0084X. Certified to: IEC60079-0, IEC60079-1, IEC60079-7, IEC60079-31. Ex de IIC T4/T5 Gb, Ex tb IIIC T100°C/T135°C Db.
<b>UL Haz Locs:</b>	Listing no. E203310. Class I, Div 2, Groups A - D. Class II, Div 2, Groups F & G. Class I, Zones 1 & 2, AExd IIC T5.
<b>UL Ord Locs:</b>	Listing no. S8116. Audible signal device.
<b>CUTR Ex d: †</b>	1Ex d IIC T4/T5 Gb, Ex tb IIIC T100°C/T135°C Db. Russian Fire Approved.
<b>CUTR Ex de: †</b>	2Ex de IIC T4/T5 Gb, Ex tb IIIC T100°C/T135°C Db. Russian Fire Approved.
<b>Inmetro Ex d:</b>	Ex d IIC T4/T5 Gb.
<b>Inmetro Ex d e:</b>	Ex d e IIC T4/T5 Gb.
<b>CQST:</b>	Exd IIC T4.
<b>ABS:</b>	American Bureau of Shipping for DB4D and DB4E only.
<b>SIL:</b>	SIL2 certification to IEC61508. Cert. No. Sira FSP 12003.
<b>EN54:</b>	Designed in accordance with EN54-3.
<b>Material:</b>	Body & horn in anti-static, UV stable, glass reinforced polyester. Swivel bracket & captive cover screws in stainless steel.
<b>Finish:</b>	Body and horn, natural black or painted to customer colour requirements.
<b>Voltage:</b>	Up to 48V d.c. Up to 254V a.c.
<b>Weight:</b>	6.0kg approx. dependent on model (+ 0.5kg for Exe).
<b>Ingress Protection:</b>	IP66 & 67.
<b>Entries:</b>	Up to 2 x M20 Exd 2 x M20 Exe. Up to 2 x 1/2" NPT UL. Note: ATEX/UL Dual Listed version up to 2 x 1/2". NPT or 2 x M20 via adapter (fitted).
<b>Terminals:</b>	4 x 2.5mm <sup>2</sup> (a.c.), 6 x 2.5mm <sup>2</sup> (d.c.).
<b>Output:</b>	Long Flare: 115dB(A) ± 3dB(A) (tone dependent). Short Flare: 108dB(A) ± 3dB(A) (tone dependent).
<b>Fire Retardancy:</b>	GRP is fire retardant to ISO 1210.
<b>Mounting:</b>	Stainless steel bracket with ratchet facility.
<b>Earth Continuity:</b>	Included on Exde version.
<b>Labels:</b>	Duty and tag labels optional.
<b>Tone Selection:</b>	27 user selectable tones available.
<b>Sounder/Beacon Unit:</b>	The DB3 may be combined with an MEDC beacon to create a combined audio/visual alarm. Contact MEDC for price and specification.



## Certified Temperature:

	Exd	Exde	UL	GOST R Exde	Chinese Exd
<b>DB3 &amp; DB3P</b>	-20°C to +70°C	-20°C to +70°C	-55°C to +70°C	-20°C to +40°C	-20°C to +55°C
<b>DB3L &amp; DB3LP*</b>	-55°C to +70°C	-50°C to +70°C	n/a	-55°C to +55°C	n/a

\* DB3L & DB3LP IECEX Min Temp - 40°C

## Two Stage Unit DB3P: Switchable between two tones:

- D.C. (i) Reversing the polarity of the supply, or  
(ii) by a 3 wire common +ve system, switching between the two -ve lines.  
A.C. (iii) Closing/opening connection between 2 terminals e.g. by using a volt free relay contact at the panel. 2 tones must be specified at time of order.

**3 & 4 Tone unit:** Remote 3 & 4 tone unit available – contact sales office for details.

## Volume Control

*Nominal Output dB(A)	Input Current mA
93	50
105	100
108	150
111	200
112	250
114	300
115	350

\*Output measured with 24V input voltage. Tone set to 970Hz continuous.

## Current Consumption

V	I	V	I
12V d.c.	760mA	220V a.c.	68mA
24V d.c.	380mA	230V a.c.	65mA
48V d.c.	190mA	240V a.c.	62mA
110V a.c.	135mA	254V a.c.	59mA
120V a.c.	124mA		

# Ordering Requirements

The following code is designed to help in selection of the correct unit. Build up the reference number by inserting the code for each component into the appropriate box.

Model	Certification	Voltage	Labels	Entries	Options	Finish																																																																																								
<table border="1"> <thead> <tr> <th>Model</th> <th>Details</th> </tr> </thead> <tbody> <tr> <td>DB3</td> <td>Standard unit</td> </tr> <tr> <td>DB3P</td> <td>Two stage</td> </tr> <tr> <td>DB3L*†</td> <td>Low temp. standard unit</td> </tr> <tr> <td>DB3LP*†</td> <td>Low temp. two stage</td> </tr> </tbody> </table>	Model	Details	DB3	Standard unit	DB3P	Two stage	DB3L*†	Low temp. standard unit	DB3LP*†	Low temp. two stage	<table border="1"> <thead> <tr> <th>Certification</th> <th>Code</th> </tr> </thead> <tbody> <tr> <td>Uncertified</td> <td>W</td> </tr> <tr> <td>Exd</td> <td>D</td> </tr> <tr> <td>Exde</td> <td>E</td> </tr> <tr> <td>IECEX Exd</td> <td>DJ</td> </tr> <tr> <td>IECEX Exde</td> <td>EJ</td> </tr> <tr> <td>UL Listed</td> <td>UL*</td> </tr> <tr> <td>UL (Ordinary Locations)</td> <td>UW</td> </tr> <tr> <td>ATEX/UL Dual Listed</td> <td>AU</td> </tr> <tr> <td>CUTR Exd</td> <td>DG</td> </tr> <tr> <td>CUTR Exde</td> <td>EG</td> </tr> <tr> <td>Chinese (CQST)</td> <td>Q</td> </tr> <tr> <td>Inmetro Exd</td> <td>DM</td> </tr> <tr> <td>Inmetro Exde</td> <td>EM</td> </tr> </tbody> </table>	Certification	Code	Uncertified	W	Exd	D	Exde	E	IECEX Exd	DJ	IECEX Exde	EJ	UL Listed	UL*	UL (Ordinary Locations)	UW	ATEX/UL Dual Listed	AU	CUTR Exd	DG	CUTR Exde	EG	Chinese (CQST)	Q	Inmetro Exd	DM	Inmetro Exde	EM	<table border="1"> <thead> <tr> <th>Voltage</th> <th>Code</th> </tr> </thead> <tbody> <tr> <td>12V - 48V d.c.</td> <td>048</td> </tr> <tr> <td>110V a.c.</td> <td>110</td> </tr> <tr> <td>120V a.c.</td> <td>120</td> </tr> <tr> <td>220V a.c.</td> <td>220</td> </tr> <tr> <td>230V a.c.</td> <td>230</td> </tr> <tr> <td>240V a.c.</td> <td>240</td> </tr> <tr> <td>254V a.c.</td> <td>254</td> </tr> </tbody> </table>	Voltage	Code	12V - 48V d.c.	048	110V a.c.	110	120V a.c.	120	220V a.c.	220	230V a.c.	230	240V a.c.	240	254V a.c.	254	<table border="1"> <thead> <tr> <th>Label</th> <th>Code</th> </tr> </thead> <tbody> <tr> <td>Duty</td> <td>D*</td> </tr> <tr> <td>Tag</td> <td>T*</td> </tr> <tr> <td>None</td> <td>N</td> </tr> </tbody> </table>	Label	Code	Duty	D*	Tag	T*	None	N	<table border="1"> <thead> <tr> <th>Entries</th> <th>Code</th> </tr> </thead> <tbody> <tr> <td>1 x M20 (Exd)</td> <td>1B</td> </tr> <tr> <td>2 x M20 (Exd/Exde)</td> <td>2B</td> </tr> <tr> <td>1 x 1/2" NPT (UL only)</td> <td>1C</td> </tr> <tr> <td>2 x 1/2" NPT (UL only)</td> <td>2C</td> </tr> </tbody> </table>	Entries	Code	1 x M20 (Exd)	1B	2 x M20 (Exd/Exde)	2B	1 x 1/2" NPT (UL only)	1C	2 x 1/2" NPT (UL only)	2C	<table border="1"> <thead> <tr> <th>Options</th> <th>Code</th> </tr> </thead> <tbody> <tr> <td>None</td> <td>N</td> </tr> <tr> <td>End of line resistor</td> <td>E*</td> </tr> <tr> <td>Special tone</td> <td>S</td> </tr> </tbody> </table>	Options	Code	None	N	End of line resistor	E*	Special tone	S	<table border="1"> <thead> <tr> <th>Finish</th> <th>Code</th> </tr> </thead> <tbody> <tr> <td>Natural Black</td> <td>N</td> </tr> <tr> <td>Red</td> <td>R</td> </tr> <tr> <td>Special</td> <td>S*</td> </tr> </tbody> </table>	Finish	Code	Natural Black	N	Red	R	Special	S*
Model	Details																																																																																													
DB3	Standard unit																																																																																													
DB3P	Two stage																																																																																													
DB3L*†	Low temp. standard unit																																																																																													
DB3LP*†	Low temp. two stage																																																																																													
Certification	Code																																																																																													
Uncertified	W																																																																																													
Exd	D																																																																																													
Exde	E																																																																																													
IECEX Exd	DJ																																																																																													
IECEX Exde	EJ																																																																																													
UL Listed	UL*																																																																																													
UL (Ordinary Locations)	UW																																																																																													
ATEX/UL Dual Listed	AU																																																																																													
CUTR Exd	DG																																																																																													
CUTR Exde	EG																																																																																													
Chinese (CQST)	Q																																																																																													
Inmetro Exd	DM																																																																																													
Inmetro Exde	EM																																																																																													
Voltage	Code																																																																																													
12V - 48V d.c.	048																																																																																													
110V a.c.	110																																																																																													
120V a.c.	120																																																																																													
220V a.c.	220																																																																																													
230V a.c.	230																																																																																													
240V a.c.	240																																																																																													
254V a.c.	254																																																																																													
Label	Code																																																																																													
Duty	D*																																																																																													
Tag	T*																																																																																													
None	N																																																																																													
Entries	Code																																																																																													
1 x M20 (Exd)	1B																																																																																													
2 x M20 (Exd/Exde)	2B																																																																																													
1 x 1/2" NPT (UL only)	1C																																																																																													
2 x 1/2" NPT (UL only)	2C																																																																																													
Options	Code																																																																																													
None	N																																																																																													
End of line resistor	E*																																																																																													
Special tone	S																																																																																													
Finish	Code																																																																																													
Natural Black	N																																																																																													
Red	R																																																																																													
Special	S*																																																																																													

\* Available unpainted only.  
† Min IECEX temp - 40°C.

\* Not all options are available UL listed.  
For ULC ordering codes and technical details please refer to the US data sheet.

All specifications, dimensions, weights and tolerances are nominal (typical) and MEDC reserve the right to vary all data without prior notice. No liability is accepted for any consequence of use.



6DS094/X 01/14



## Exd(e), Weatherproof



### Introduction

This range of lightweight all GRP, flameproof voice sounders is intended for use in potentially explosive gas and dust atmospheres and has been designed with high ingress protection to cope with the harsh environmental conditions found offshore and onshore in the oil, gas and petrochemical industries.

The flamepaths, flare and the body, are manufactured completely from a UV stable glass reinforced polyester. Stainless steel screws and sinter are incorporated thus ensuring a corrosion free product. A tapered flamepath is used to overcome the problems of assembly of parallel spigot flamepaths.

This unit offers up to 20 seconds of speech which can be recorded via an integral microphone or an input from an external source. The unit incorporates a variable delay allowing speech to be repeated at equal intervals of up to approximately 15 seconds.

In addition, a 'mechanical bell' sound version is available.

An optional Exe terminal chamber is available.

An uncertified version is available for use in non-explosive atmospheres.

### Features

- Zone 1, Zone 2 and non-Ex use.
- Ex de IIC T4/T5.
- ATEX approved, EEx II 2GD.
- Optional Exe terminal chamber.
- BASEEFA certified.
- IECEx certified Gb, Db.
- CUTR certified.
- Chinese (CQST) certified.
- Brazilian (Inmetro) certified.
- IP66 and IP67.
- \*Certified temperature: -55°C to +70°C.
- All GRP corrosion free flamepaths.
- Up to 110dB(A) output.
- Integral volume control.
- d.c. version accepts any voltage between 12V d.c. and 48V d.c.
- End of line resistor option.
- Sounder/Beacon Combination Unit available.
- Bell recording version available.

*\*Depending on version.*



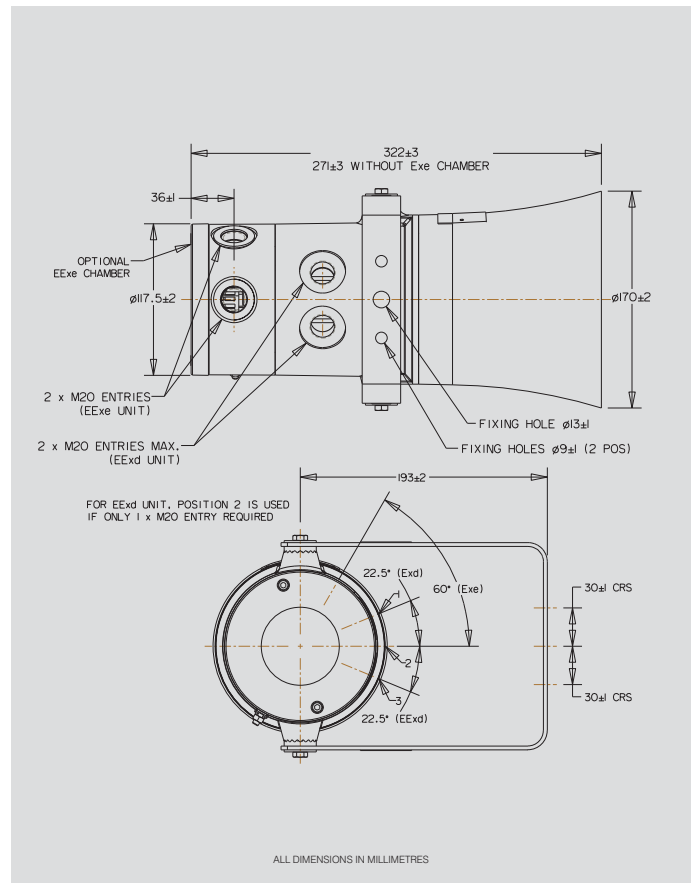
# Certification and Specification

<b>ATEX EEx d:</b>	Cert. no. BAS00ATEX2097X. Certified to: EN50014, EN50018. Ex II 2GD, EEx d IIC T4/T5.
<b>ATEX EEx de:</b>	Cert. no. BAS00ATEX2098X. Certified to: EN50014, EN50018, EN50019. Ex II 2GD, EEx de IIC T4/T5.
<b>IECEX Ex d:</b>	Cert. no. IECEX BAS 11.0083X. Certified to: IEC60079-0, IEC60079-1, IEC60079-31. Ex d IIC T4/T5 Gb, Ex tb IIIC T100°C/T135°C Db.
<b>IECEX Ex de:</b>	Cert. no. IECEX BAS 11.0084X. Certified to: IEC60079-0, IEC60079-1, IEC60079-7, IEC60079-31. Ex de IIC T4/T5 Gb, Ex tb IIIC T100°C/T135°C Db.
<b>CUTR Ex d:</b>	1Ex d IIC T4/T5 Gb, Ex tb IIIC T100°C/T135°C Db. Russian Fire Approved.
<b>CUTR Ex de:</b>	2Ex de IIC T4/T5 Gb, Ex tb IIIC T100°C/T135°C Db. Russian Fire Approved.
<b>Inmetro Ex d:</b>	Ex d IIC T4/T5 Gb.
<b>Inmetro Ex de:</b>	Ex d e IIC T4/T5 Gb.
<b>CQST:</b>	Exd IIC T4.
<b>Material:</b>	Body & horn in anti-static, UV stable, glass reinforced polyester (GRP). Swivel bracket & captive cover screws in stainless steel.
<b>Finish:</b>	Body and horn, natural black or painted to customer colour requirements.
<b>Voltage:</b>	Up to 48V d.c.
<b>Weight:</b>	6.0kg approx. dependent on model (+0.5kg for Exe).
<b>Ingress Protection:</b>	IP66 & 67.
<b>Entries:</b>	Up to 2 x M20 Exd. 2 x M20 Exe.
<b>Terminals:</b>	6 x 2.5mm <sup>2</sup> (d.c.).
<b>Output:</b>	110dB(A) (message dependent).
<b>Volume Control:</b>	Potentiometer.
<b>Voice Recording:</b>	Up to 20 seconds recording time.
<b>Fire Retardancy:</b>	GRP is fire retardant to ISO 1210.
<b>Mounting:</b>	Stainless steel bracket with ratchet facility.
<b>Earth Continuity:</b>	Included on Exde version.
<b>Sounder/Beacon Unit:</b>	The DB3V may be combined with an MEDC beacon to create a combined voice/visual alarm. Contact MEDC for price and specification.
<b>Labels:</b>	Duty and tag labels optional.

## Certified Temperature:

	Exd	Exde	GOST R&K Exd	GOST R Exde	Chinese Exd
<b>DB3V</b>	-20°C +70°C	-20°C +70°C	-20°C +50°C	-20°C +40°C	-20°C +55°C
<b>DB3LV*</b>	-55°C +70°C	-50°C +70°C	-55°C +55°C	-55°C +55°C	n/a

\* DB3LV IECEX Min Temp - 40°C.



## Current Consumption:

V	I
12V d.c.	1.2A
24V d.c.	600mA
48V d.c.	300mA

## Ordering Requirements

The following code is designed to help in selection of the correct unit. Build up the reference number by inserting the code for each component into the appropriate box.

Model	Certification	Options	Entries	Finish																																																								
<table border="1"> <thead> <tr> <th>Model</th> <th>Details</th> </tr> </thead> <tbody> <tr> <td>DB3V</td> <td>Voice unit</td> </tr> <tr> <td>DB3LV †</td> <td>Low temp voice unit*</td> </tr> </tbody> </table>	Model	Details	DB3V	Voice unit	DB3LV †	Low temp voice unit*	<table border="1"> <thead> <tr> <th>Certification</th> <th>Code</th> </tr> </thead> <tbody> <tr> <td>Uncertified</td> <td>W</td> </tr> <tr> <td>ATEX Exd</td> <td>D</td> </tr> <tr> <td>ATEX Exde</td> <td>E</td> </tr> <tr> <td>IECEX Exd</td> <td>DJ</td> </tr> <tr> <td>IECEX Exe</td> <td>EJ</td> </tr> <tr> <td>CUTR Exd</td> <td>DG</td> </tr> <tr> <td>CUTR Exde</td> <td>EG</td> </tr> <tr> <td>Chinese (CQST)</td> <td>Q</td> </tr> <tr> <td>Inmetro Exd</td> <td>DM</td> </tr> <tr> <td>Inmetro Exde</td> <td>EM</td> </tr> </tbody> </table>	Certification	Code	Uncertified	W	ATEX Exd	D	ATEX Exde	E	IECEX Exd	DJ	IECEX Exe	EJ	CUTR Exd	DG	CUTR Exde	EG	Chinese (CQST)	Q	Inmetro Exd	DM	Inmetro Exde	EM	<table border="1"> <thead> <tr> <th>Options</th> <th>Code</th> </tr> </thead> <tbody> <tr> <td>Duty</td> <td>D*</td> </tr> <tr> <td>Tag</td> <td>T*</td> </tr> <tr> <td>End of line resistor</td> <td>E†</td> </tr> <tr> <td>Bell tone</td> <td>O</td> </tr> <tr> <td>None</td> <td>N</td> </tr> </tbody> </table>	Options	Code	Duty	D*	Tag	T*	End of line resistor	E†	Bell tone	O	None	N	<table border="1"> <thead> <tr> <th>Entries</th> <th>Code</th> </tr> </thead> <tbody> <tr> <td>1 x M20 (Exd)</td> <td>1B</td> </tr> <tr> <td>2 x M20 (Exd/Exe)</td> <td>2B</td> </tr> <tr> <td>2 x M20 (Exd/Exe)</td> <td>2BP*</td> </tr> </tbody> </table>	Entries	Code	1 x M20 (Exd)	1B	2 x M20 (Exd/Exe)	2B	2 x M20 (Exd/Exe)	2BP*	<table border="1"> <thead> <tr> <th>Finish</th> <th>Code</th> </tr> </thead> <tbody> <tr> <td>Natural Black</td> <td>N</td> </tr> <tr> <td>Red</td> <td>R</td> </tr> <tr> <td>Special</td> <td>S*</td> </tr> </tbody> </table>	Finish	Code	Natural Black	N	Red	R	Special	S*
Model	Details																																																											
DB3V	Voice unit																																																											
DB3LV †	Low temp voice unit*																																																											
Certification	Code																																																											
Uncertified	W																																																											
ATEX Exd	D																																																											
ATEX Exde	E																																																											
IECEX Exd	DJ																																																											
IECEX Exe	EJ																																																											
CUTR Exd	DG																																																											
CUTR Exde	EG																																																											
Chinese (CQST)	Q																																																											
Inmetro Exd	DM																																																											
Inmetro Exde	EM																																																											
Options	Code																																																											
Duty	D*																																																											
Tag	T*																																																											
End of line resistor	E†																																																											
Bell tone	O																																																											
None	N																																																											
Entries	Code																																																											
1 x M20 (Exd)	1B																																																											
2 x M20 (Exd/Exe)	2B																																																											
2 x M20 (Exd/Exe)	2BP*																																																											
Finish	Code																																																											
Natural Black	N																																																											
Red	R																																																											
Special	S*																																																											

\* Available unpainted only.  
† Min IECEX temp -40°C.

\* Please specify wording.  
† State value.

\* With one certified plug fitted.

\* Please specify.

## Ex de



## Introduction

Hazardous areas often require the use of acoustical signals for warning or information purposes. The ExII-sounder dEV20 offers both of these signalling features and is designed for continuous operation.

The ExII-sounder dEV20 has an ingress protection rating of IP66, meaning it is suitable for both indoor and outdoor installation.

The ExII-Sounder consists of a flame-proof housing manufactured from a light grade aluminium alloy and a sound channel made from impact-resistant polyester.

The sounder dEV20 includes two signal levels. The signal tone for the first level is adjusted with the slide switches 1-5 (S0) according to the signal choice list. The signal tone for the second signal level is adjusted with the slide switches 6-10 (S1).

Delivery condition: S0 = Tone 24 ,  
S1 = Tone 4

## Features

- Sound pressure level: up to 115 dB(A)
- 32 signal tones, 2-stage alarm
- Volume adjustable (3 steps of 10 dB)
- Aluminium housing, Polyamide
- ATEX Approval
- IP66
- II 2 G Ex d e IIB + H<sup>2</sup> T6 Gb
- II 2 D Ex tb IIIC T85°C Db

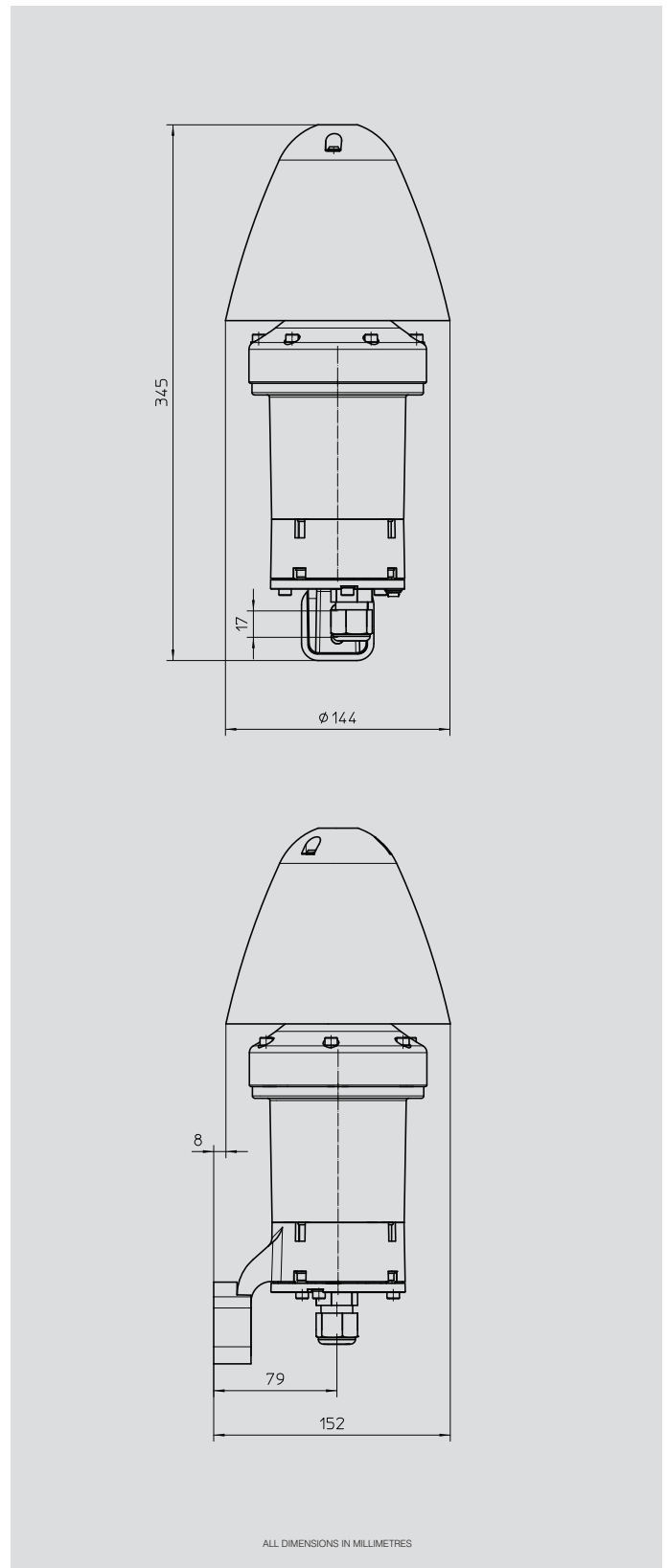
## Warning in a chemical plant

The ExII-sounder dEV20 is made to protection category IP66 and may be used in zones 1 + 2 and 21 + 22.



# Certification and Specification

<b>Type of protection:</b>	ATEX Cert. No. PTB 12 ATEX 1014. II 2 G Ex d e IIB + H2 T6 Gb. II 2 D Ex tb IIIC T85°C Db. IECEx Cert. No. IECEx PTB 13.0012 Ex d e IIB + H2 T6 Gb Ex tb IIIC T85°C Db
<b>Protection class:</b>	I.
<b>Certified temp:</b>	T6: -50°C to +60°C
<b>Housing:</b>	Seawater resistant Aluminium, sound protection hood Polyamide (black).
<b>Weight:</b>	2.8 kg
<b>IP rating:</b>	IP66.
<b>Cable entries:</b>	M20 x 1.5 (cable 5.5 to 13 mm).
<b>Signal selection:</b>	By DIP switches.
<b>Volume:</b>	Max. 115 dB(A) reducible in 3 levels each by 10 dB.
<b>Signal tone:</b>	32 for each signal level.
<b>Current consumption:</b>	93 - 460mA (dep. on voltage variation).
<b>Power consumption:</b>	Max. 14 W.
<b>Clamping capacity:</b>	To 2.5 mm <sup>2</sup> .
<b>Dimensions:</b>	~ Ø 144 x 345 mm.



## Ordering Information

Type	Name	Voltage	Current Consumption	Article no.
dEV20	Ex-Sounder	24 VDC	460 mA	F215 910 13
dEV20	Ex-Sounder	85 - 265 VAC	93 mA (230 V)	F215 910 07

All specifications, dimensions, weights and tolerances are nominal (typical) and MEDC reserve the right to vary all data without prior notice. No liability is accepted for any consequence of use.



## Intrinsically Safe (Exia)



### Features

- Zone 0, Zone 1 and Zone 2 use.
- Ex ia IIC T4.
- ATEX approved Ex II 1G & Ex 1 M1.
- BASEEFA certified.
- IECEx certified, Ga.
- FM Approved – Class I, Div. 1, Groups A-D.
- CSA certified.
- Brazilian (Inmetro) certified.
- IP65.
- Certified temperature: -20°C to +55°C.
- Volume control as standard.
- Up to 103 dB(A).
- 26 different sound outputs, user selectable by internal switches.
- Encapsulated electronics.
- Second tone selectable using third wire.

### Introduction

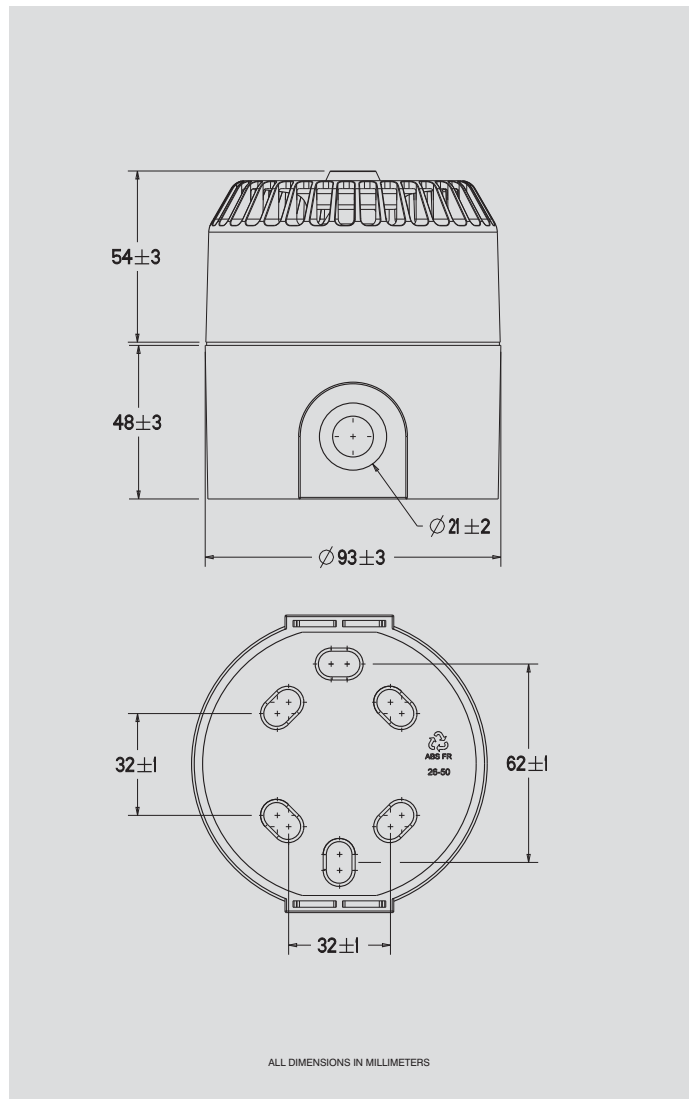
This range of lightweight, intrinsically safe Sounders have been designed with a high weatherproof rating to cope with the harsh environmental conditions found offshore and onshore in the oil, gas and petrochemical industries.

The unit is available in 2 models: 12V and 24V.



# Certification and Specification

<b>Certification:</b>	Certified to IEC60079-0, IEC60079-11, IEC60079-26. Certified to EN60079-0, EN60079-11, EN60079-26. ATEX Cert. No. BAS00ATEX1259X. Ex II 1 G Ex ia IIC T4 Ga. System Cert. No. (BAS no.) Ex 01E2024. HSE(M) to EN50014, EN50020 and EN50303. Exia 1 Cert. No. MECS01ATEX4260 (unit) and 94Y7095 (system). IECEx BAS 08.0043x Exia IIC T4 Ga. FM Approved to Class 1, Div 1 groups A, B, C and D. J.I. 3008604. Refer to FM Data sheet at rear of catalogue for complete information. CSA to C22.2 Nos. 0, 0.4, 0.5, 25, 30, 205. Class 1 groups A, B, C and D. Cert. No. 79122. Brazilian (Inmetro) certified Ex ia IIC T4 Ga. American Bureau of Shipping Type Approval.
<b>Material:</b>	A.B.S. (Acrylonitrile Butadiene Styrene).
<b>Finish:</b>	Available in Red as standard.
<b>Sound Output:</b>	100± 3dB(A) for 12V and 24V versions. Typical max value only – variable with tone. Tones comply with BS 5839 Part 1.
<b>Current Consumption:</b>	24V model – 14 mA max. nominal. 12V model – 12 mA max. nominal.
<b>Certified Temp:</b>	-20°C to +55°C.
<b>Weight:</b>	0.3kg.
<b>Entries:</b>	2 x M20 side entries.
<b>Terminals:</b>	6 off suitable to accept up to 2.5mm <sup>2</sup> cable, for looping.



## Ordering Requirements

The following code is designed to help in selection of the correct unit. Build up the reference number by inserting the code for each component into the appropriate box.

Model	Certification	Voltage	Tag Label	Finish																																
DB5																																				
	<table border="1"> <thead> <tr> <th>Certification</th> <th>Code</th> </tr> </thead> <tbody> <tr> <td>BASEEFA GP 1</td> <td>M*</td> </tr> <tr> <td>BASEEFA GP 2</td> <td>B</td> </tr> <tr> <td>IECEX</td> <td>J</td> </tr> <tr> <td>FM</td> <td>FM</td> </tr> <tr> <td>CSA</td> <td>C</td> </tr> <tr> <td>Inmetro</td> <td>IM</td> </tr> </tbody> </table>	Certification	Code	BASEEFA GP 1	M*	BASEEFA GP 2	B	IECEX	J	FM	FM	CSA	C	Inmetro	IM	<table border="1"> <thead> <tr> <th>Voltage</th> <th>Code</th> </tr> </thead> <tbody> <tr> <td>12V</td> <td>012</td> </tr> <tr> <td>24V</td> <td>024</td> </tr> </tbody> </table>	Voltage	Code	12V	012	24V	024	<table border="1"> <thead> <tr> <th>Tag Label</th> <th>Code</th> </tr> </thead> <tbody> <tr> <td>None</td> <td>N</td> </tr> <tr> <td>Yes</td> <td>Y*</td> </tr> </tbody> </table> <p>*Please specify.</p>	Tag Label	Code	None	N	Yes	Y*	<table border="1"> <thead> <tr> <th>Finish</th> <th>Code</th> </tr> </thead> <tbody> <tr> <td>Red</td> <td>R</td> </tr> <tr> <td>Special</td> <td>S*</td> </tr> </tbody> </table> <p>*Please specify.</p>	Finish	Code	Red	R	Special	S*
Certification	Code																																			
BASEEFA GP 1	M*																																			
BASEEFA GP 2	B																																			
IECEX	J																																			
FM	FM																																			
CSA	C																																			
Inmetro	IM																																			
Voltage	Code																																			
12V	012																																			
24V	024																																			
Tag Label	Code																																			
None	N																																			
Yes	Y*																																			
Finish	Code																																			
Red	R																																			
Special	S*																																			

\* 12V only.

## Intrinsically Safe (Ex ia), Weatherproof



### Features

- Zones 0, 1, 2 and safe area use.
- Ex ia IIB/IIC T4.
- ATEX approved Ex II 1G.
- Weatherproof uncertified version.
- BASEEFA certified.
- CUTR certified.
- IP66 & IP67.
- Certified temperature: -55°C to +70°C.
- Corrosion resistant red painted GRP.
- Up to 110 dB(A) output.
- 27 tones, user selectable.
- Tones comply with UKOOA/PFEER guidelines.
- Any two tones may be switched by the external voltage supply.
- Retained stainless steel cover screws.

### Introduction

This range of ruggedised, intrinsically safe and weatherproof sounders, intended for use in potentially explosive atmospheres, has been designed with high ingress protection to cope with the harsh environmental conditions found offshore and onshore in the oil, gas and petrochemical industries.

The unit is available in 12V and 24V versions and for gas groups IIB or IIC.

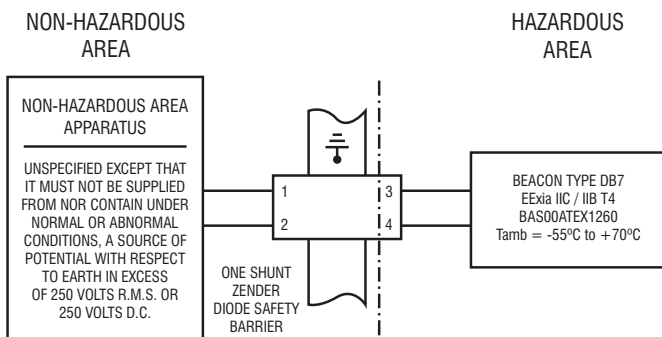
A lower cost, uncertified version is available for use in non-explosive atmospheres.



# Certification and Specification

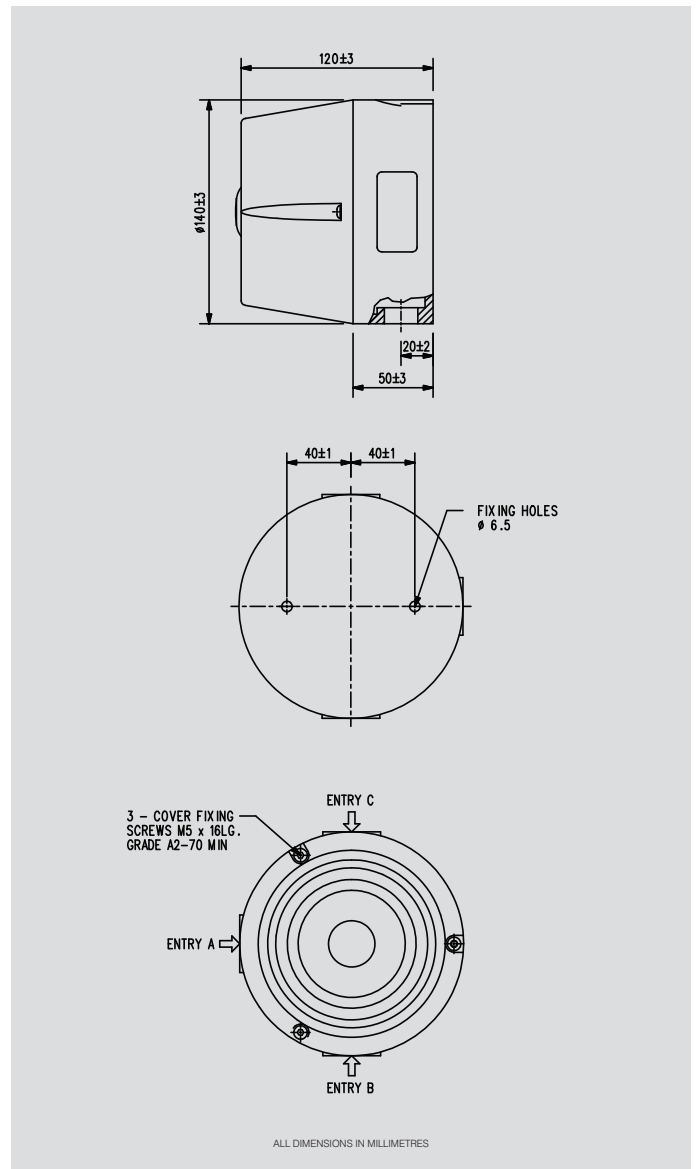
<b>ATEX EEx ia:</b>	Cert. no. BAS00ATEX1260X. (Apparatus) Cert. no. 96D2362. (System) Certified to: EN50014, EN50020, EN50039. Ex II 1G, EEx ia IIC T4. Ex II 1G, EEx ia IIB T5.
<b>CUTR EEx ia:</b>	OEEEx ia IIC T4. OEEEx ia IIB T4. Russian Fire Approved.
<b>Material:</b>	UV stable glass reinforced polyester. Retained stainless steel cover screws.
<b>Finish:</b>	Painted red as standard or to customer specification.
<b>Voltage:</b>	12V or 24V via suitable barrier.
<b>Current Consumption:</b>	24V models 34mA – 68mA. 12V models 25mA – 55mA.
<b>Sound Output:</b>	107 ± 3dB(A) at 1 metre for 12V and 24V IIB versions. 103 ± 3dB(A) at 1 metre for 12V and 24V IIC versions. Typical value only – variable with tone.
<b>Tone Selection:</b>	Switchable between any two of the 27 tones by reversing the polarity of the supply.
<b>Certified Temp:</b>	-55°C to +70°C.
<b>Weight:</b>	1.0 kg.
<b>Ingress Protection:</b>	IP66 & IP67.
<b>Entries:</b>	Up to 3 x M20 via knockouts.
<b>Terminals:</b>	8 x 2.5mm <sup>2</sup> .
<b>Labels:</b>	Duty and tag labels available.

## INSTALLATION DRAWING



REFER TO TECHNICAL MANUAL FOR SUITABLE BARRIERS

NOTE: REFER TO UNIT INSTRUCTION SHEET FOR FULL INSTALLATION DRAWING



## Ordering Requirements

The following code is designed to help in selection of the correct unit. Build up the reference number by inserting the code for each component into the appropriate box.

<b>Model</b> DB7P	<b>Certification</b> [ ]	<b>Voltage</b> [ ]	<b>Labels</b> [ ]	<b>Finish</b> [ ]			
<b>Certification</b>	<b>Code</b>	<b>Voltage</b>	<b>Code</b>	<b>Label</b>	<b>Code</b>	<b>Colour</b>	<b>Code</b>
Uncertified	W	12V	012	Duty	D*	Painted Red	R
ATEX/CENELEC IIB	BB	24V	024	Tag	T*	Special	S*
ATEX/CENELEC IIC	BC			None	N		
CUTR IIB	GB						
CUTR IIC	GC						

\*Please specify wording.

\*Please specify.



## Harsh Industrial & Marine Environments



### Features

- IP66 & IP67.
- Operating temperature:  $-55^{\circ}\text{C}$  to  $+70^{\circ}\text{C}$ .
- Corrosion resistant red painted GRP.
- Up to 110 dB(A) output.
- 27 tones, user selectable.
- Tones comply with UKOOA/PFEER guidelines.
- Any two tones may be switched by the external voltage supply (d.c. version).
- Retained stainless steel cover screws.
- Available compliant to AFNOR NF S 32 001.

### Introduction

This range of sounders have been specially designed for use in demanding industrial and marine environments where a robust construction and high-ingress protection rating is required.

The body is manufactured completely from a UV stable glass reinforced polyester which is also highly flame retardant and impact resistant. Stainless steel screws are incorporated thus ensuring a corrosion free product.

*MEDC can also provide a range of sounders suitable for use in potentially explosive atmospheres.*

*For more information please contact MEDC.*

IP66/67  
Weatherproof

Corrosion Free  
All GRP

# Certification and Specification

<b>Certification:</b>	UV stable glass reinforced polyester. Retained stainless steel cover screws.	
<b>Finish:</b>	Painted red as standard or to customer specification.	
<b>Voltage:</b>	d.c. 12V, 24V. a.c. 115/230V.	
<b>Current Consumption:</b>	24V operation 55mA - 100mA. 12V operation 55mA - 90mA.	115V operation 8.5mA - 14mA. 230V operation 4.5mA - 7mA.
<b>Operating Temp:</b>	-55°C to +70°C.	
<b>Weight:</b>	1.2kg approx. Dependent on model.	
<b>Ingress Protection:</b>	IP66 & IP67.	
<b>Entries:</b>	Up to 3 x M20 via knockouts.	
<b>Terminals:</b>	6 x 2.5mm <sup>2</sup> .	
<b>Output:</b>	107 ± 3dB(A) at 1 metre. Typical value only – variable with tone.	
<b>Labels:</b>	Duty and tag labels optional for details.	

## Volume Control

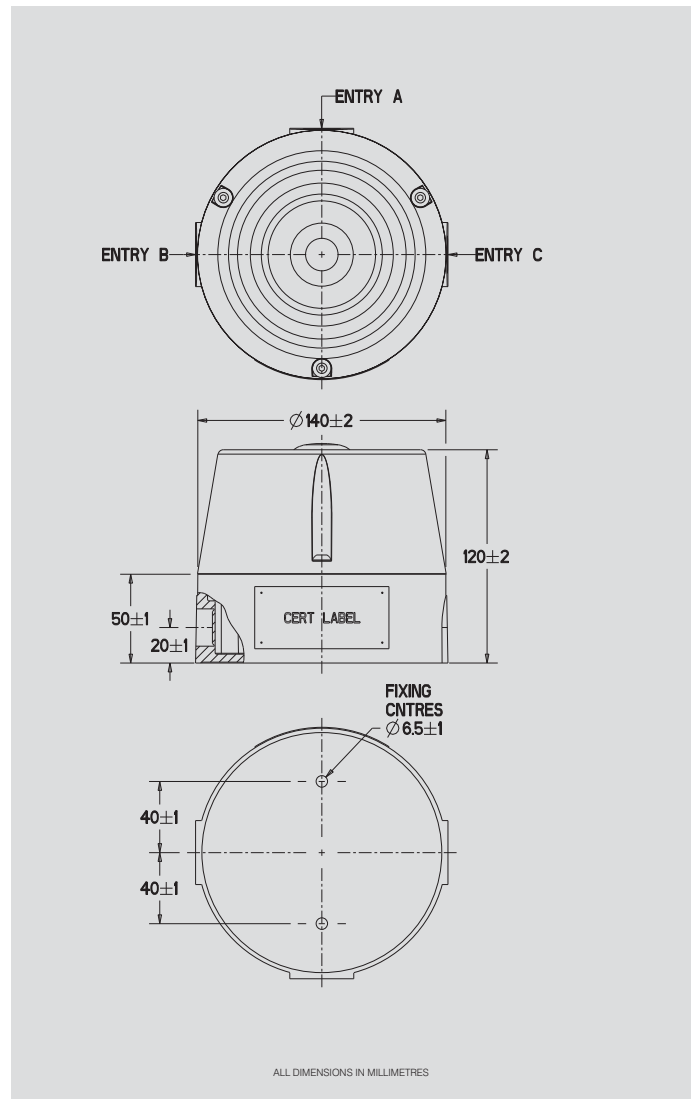
*Nominal Output dB(A)	Input Current mA
92	60
100	70
104	80
109	90

\*Output measured with 24V input voltage. Tone set to 2850Hz continuous.

## Tone Selection:

<b>Single Stage DB12:</b>	27 user selectable tones available.
<b>DB12P (Two stage unit):</b>	Switchable between any two tones by either: (i) Reversing the polarity of the supply, or (ii) By a 3 wire common +ve system, switching between the two -ve lines. Note: Two stage unit available in d.c. versions only.

AFNOR NF S 32 001 compliant version available – contact sales office.



## Ordering Requirements

The following code is designed to help in selection of the correct unit. Build up the reference number by inserting the code for each component into the appropriate box.

Model		Voltage		Labels		Finish	
<b>Model</b>	<b>Details</b>	<b>Voltage</b>	<b>Code</b>	<b>Label</b>	<b>Code</b>	<b>Finish</b>	<b>Code</b>
DB12	Standard Unit	12V d.c.	012	Duty	D*	Red	R
DB12P	Two Stage (d.c. only)	24V d.c.	024	Tag	T*	Special	S*
		115/230V a.c.	115	None	N		

\* Please specify wording..

\* Please specify.

## Harsh Industrial & Marine Environments



### Features

- IP66 and IP67.
- Temperature range: -55°C to +70°C.
- Corrosion resistant grey painted GRP.
- Up to 117dB(A) output.
- 27 user selectable tones.
- Tones may be programmed to customer specification.
- Stainless steel ratcheted mounting bracket.
- Earth continuity available.
- Paint finish to customer requirement.
- Available compliant to AFNOR NF S 32 001.

### Introduction

This range of sounders have been specially designed for use in demanding industrial and marine environments where a robust construction and high ingress protection rating is required.

The body is manufactured completely from a UV stable glass reinforced polyester which is also highly flame retardant and impact resistant. Stainless steel screws are incorporated thus ensuring a corrosion free product.

*MEDC can also provide a range of sounders suitable for use in potentially explosive atmospheres.*

*For more information please contact MEDC.*

IP66/67  
Weatherproof

Corrosion Free  
All GRP

# Certification and Specification

<b>Certification:</b>	Body & horn in UV stable, glass reinforced polyester. Swivel bracket in stainless steel. Cover screws in stainless steel.
<b>Finish:</b>	Painted to customer specification.
<b>Voltage:</b>	Up to 48V d.c. Up to 254V a.c.
<b>Operating Temp:</b>	-55°C to +70°C.
<b>Weight:</b>	2.6kg approx. Dependent on model.
<b>Ingress Protection:</b>	IP66 & IP67.
<b>Entries:</b>	2 x M20 ISO.
<b>Terminals:</b>	4 x 2.5mm <sup>2</sup> (a.c.), 6 x 2.5mm <sup>2</sup> (d.c.).
<b>Output:</b>	DB15 117dB(A) maximum.
<b>Mounting:</b>	Stainless steel bracket with ratchet facility.
<b>Earth Continuity:</b>	Available.
<b>Labels:</b>	Duty and tag labels optional.

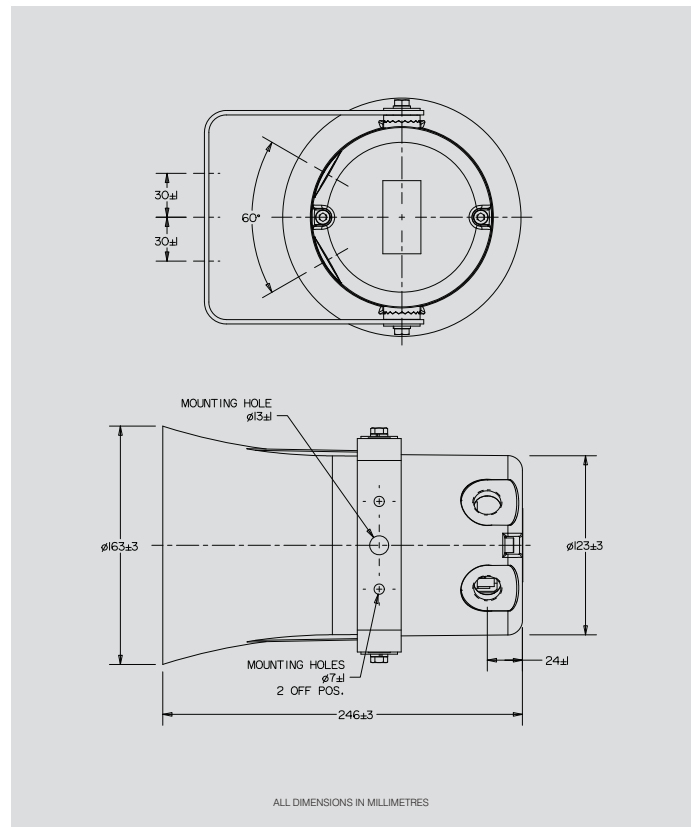
## Volume Control:

*Nominal Output dB(A)	Input Current mA
100	150
105	250
108	350
110	450
112	550

\*Output measured with 24V input voltage. Tone set to 970Hz continuous.

## Current Consumption:

V	I
12V d.c.	900mA
24V d.c.	600mA
48V d.c.	280mA
110V a.c.	150mA
120V a.c.	175mA
220V a.c.	93mA
240V a.c.	86mA
254V a.c.	80mA



## Tone Selection:

### DB15: (Single):

27 user selectable tones available.  
Additional 5 tones may be programmed.

### DB15P (Two stage unit):

Switchable between any two of the 27 tones by either:  
(i) Reversing the polarity of the supply, or  
(ii) by a 3 wire common +ve system, switching between the two -ve lines.

Note: Two stage unit available in d.c. versions (DB15P) only.

AFNOR NF S 32 001 compliant version available – contact sales office for details.

# Ordering Requirements

The following code is designed to help in selection of the correct unit. Build up the reference number by inserting the code for each component into the appropriate box.

Model	Voltage	Options	Finish																																						
<div style="border: 1px solid black; width: 40px; height: 20px; margin: 0 auto;"></div> <div style="border: 1px solid black; width: 40px; height: 20px; margin: 0 auto;"></div>	<table border="1"> <thead> <tr> <th>Voltage</th> <th>Code</th> </tr> </thead> <tbody> <tr> <td>12V d.c.</td> <td>012</td> </tr> <tr> <td>24V-48V d.c.</td> <td>048</td> </tr> <tr> <td>110V a.c.</td> <td>110*</td> </tr> <tr> <td>120V a.c.</td> <td>120*</td> </tr> <tr> <td>220V a.c.</td> <td>220*</td> </tr> <tr> <td>240V a.c.</td> <td>240*</td> </tr> <tr> <td>254V a.c.</td> <td>254*</td> </tr> </tbody> </table>	Voltage	Code	12V d.c.	012	24V-48V d.c.	048	110V a.c.	110*	120V a.c.	120*	220V a.c.	220*	240V a.c.	240*	254V a.c.	254*	<table border="1"> <thead> <tr> <th>Options</th> <th>Code</th> </tr> </thead> <tbody> <tr> <td>Duty</td> <td>D*</td> </tr> <tr> <td>Tag</td> <td>T*</td> </tr> <tr> <td>Earth Continuity</td> <td>E</td> </tr> <tr> <td>End of Line Resistor</td> <td>R†</td> </tr> <tr> <td>Blanking Plug</td> <td>P</td> </tr> <tr> <td>None</td> <td>N</td> </tr> </tbody> </table>	Options	Code	Duty	D*	Tag	T*	Earth Continuity	E	End of Line Resistor	R†	Blanking Plug	P	None	N	<table border="1"> <thead> <tr> <th>Finish</th> <th>Code</th> </tr> </thead> <tbody> <tr> <td>Painted Grey</td> <td>G</td> </tr> <tr> <td>Red</td> <td>R</td> </tr> <tr> <td>Special</td> <td>S*</td> </tr> </tbody> </table>	Finish	Code	Painted Grey	G	Red	R	Special	S*
Voltage	Code																																								
12V d.c.	012																																								
24V-48V d.c.	048																																								
110V a.c.	110*																																								
120V a.c.	120*																																								
220V a.c.	220*																																								
240V a.c.	240*																																								
254V a.c.	254*																																								
Options	Code																																								
Duty	D*																																								
Tag	T*																																								
Earth Continuity	E																																								
End of Line Resistor	R†																																								
Blanking Plug	P																																								
None	N																																								
Finish	Code																																								
Painted Grey	G																																								
Red	R																																								
Special	S*																																								

\* DB15P not available in a.c. version.

\* Please specify wording.

† Specify value.

\* Please specify

## Exd, Weatherproof



## Features

- Zone 1 and Zone 2 use.
- Exd IIB T5.
- ATEX approved Ex II 2G.
- BASEEFA certified.
- IECEx certified, Gb.
- Brazilian (Inmetro) certified.
- IP65.
- Certified temperature: -20°C to +55°C.
- 2 cable entries.
- Captive cover screws.

## Introduction

This explosion-proof bell is available in two voltages.

The bell is manufactured from cast iron, finished in epoxy paint.

Colour to customer's specification.



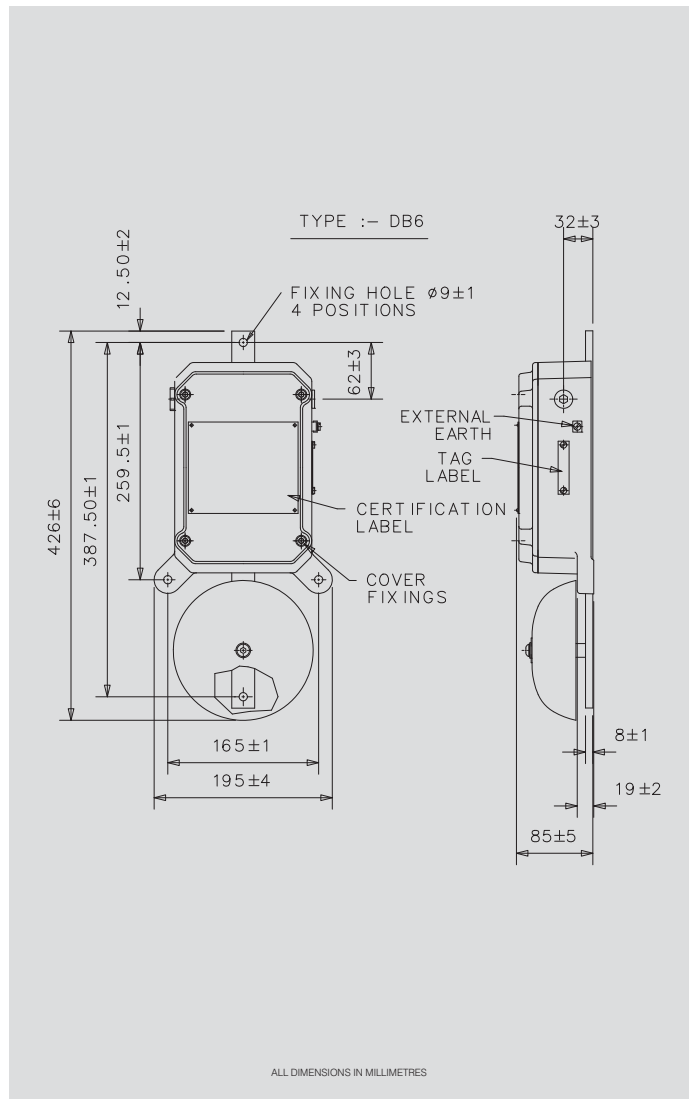
# Certification and Specification

<b>Certification:</b>	Certified to IEC60079-0, IEC60079-1. Certified to EN60079-0, EN60079-1. ATEX Cert. No. Baseefa03ATEX0257, Ex II 2 G Ex d IIB T5 Gb. IECEx Cert. No. IECEx BAS 09.0040 Exd IIB T5 Gb. Brazilian (Inmetro) Certified: Ex d IIB T5 Gb.
<b>Material:</b>	Cast Iron.
<b>Finish:</b>	Grey epoxy paint as standard or to customer specification.
<b>Voltage:</b>	24V d.c. or 200/254V a.c. 50/60 Hz.
<b>Contact Spring:</b>	Phosphor Bronze.
<b>Contacts:</b>	Silver.
<b>Coil:</b>	Bakelite former.
<b>Magnet:</b>	Laminated iron.
<b>Armature:</b>	Pivoted to operate shaft and hammer at back of gong through flameproof bearing.
<b>Certified Temp:</b>	-20°C to +55°C.
<b>Weight:</b>	11 kg.
<b>Ingress Protection:</b>	IP65.
<b>Earthing:</b>	M6 Internal and external earthing points provided.
<b>Entries:</b>	2 x M20 ISO with one Exd blank fitted.
<b>Labels:</b>	Tag label optional.
<b>Termination:</b>	Terminals suitable for 4 x 4mm <sup>2</sup> cables.

## Ratings:

Voltage	VA	Amps	dB(A) rating
24V d.c.	1.92	0.08	98 ± 3
200/254 a.c.	6/12.7	0.03/0.05	106 ± 3

24V d.c. unit polarised and suppressed for use on monitored fire alarm system sounder circuits.



## Ordering Requirements

The following code is designed to help in selection of the correct unit. Build up the reference number by inserting the code for each component into the appropriate box.

<b>Model</b> DB6	<b>Voltage</b> [ ]	<b>Certification</b> [ ]	<b>Tag Label</b> [ ]	<b>Finish</b> [ ]																														
	<table border="1"> <thead> <tr> <th>Voltage</th> <th>Code</th> </tr> </thead> <tbody> <tr> <td>24V d.c.</td> <td>B</td> </tr> <tr> <td>240V a.c.</td> <td>H</td> </tr> </tbody> </table>	Voltage	Code	24V d.c.	B	240V a.c.	H	<table border="1"> <thead> <tr> <th>Certification</th> <th>Code</th> </tr> </thead> <tbody> <tr> <td>ATEX</td> <td>B</td> </tr> <tr> <td>IECEx</td> <td>J</td> </tr> <tr> <td>Inmetro</td> <td>DM</td> </tr> <tr> <td>Weatherproof</td> <td>W</td> </tr> </tbody> </table>	Certification	Code	ATEX	B	IECEx	J	Inmetro	DM	Weatherproof	W	<table border="1"> <thead> <tr> <th>Tag Label</th> <th>Code</th> </tr> </thead> <tbody> <tr> <td>Label</td> <td>Y*</td> </tr> <tr> <td>None</td> <td>N</td> </tr> </tbody> </table> <p>* Please specify wording.</p>	Tag Label	Code	Label	Y*	None	N	<table border="1"> <thead> <tr> <th>Colour</th> <th>Code</th> </tr> </thead> <tbody> <tr> <td>Grey</td> <td>G</td> </tr> <tr> <td>Red</td> <td>R</td> </tr> <tr> <td>Special</td> <td>S*</td> </tr> </tbody> </table> <p>* Please specify.</p>	Colour	Code	Grey	G	Red	R	Special	S*
Voltage	Code																																	
24V d.c.	B																																	
240V a.c.	H																																	
Certification	Code																																	
ATEX	B																																	
IECEx	J																																	
Inmetro	DM																																	
Weatherproof	W																																	
Tag Label	Code																																	
Label	Y*																																	
None	N																																	
Colour	Code																																	
Grey	G																																	
Red	R																																	
Special	S*																																	

## Ex de



## Introduction

The signalling bell dGW21 was designed to warn, call and signal in group II explosive atmospheres and rough environmental conditions in hazardous areas.

The signalling bell produces a sound volume of approx. 105dB(A) at 1 meter distance.

The frequency of the sound of the bell is approx 1kHz, meaning the signal can be clearly heard against lower frequency background noise. The bell can also be activated with the presence of a telephone ringing signal in the dRGW 21 version.

The protection of this product is a mixture of Exd "flameproof" for the driver system and Exe "increased safety" for the termination chamber. The dRGW 21 offers initiation by a relay from a telephone ringing voltage. The flameproof chamber contains the electromagnetic driver system and the enclosure is made from GRP (glass-fibre reinforced polyester), guaranteeing protection against corrosion. As the dGW 21 is safety class II, so there is no equipotential bonding necessary.

All D.C. versions are also equipped with an electronic contact breaker, increasing product service life.

## Features

- ATEX II 2 G Ex de IIC T6
- Housing made of glass-fibre reinforced polyester (GRP)
- Volume: approx: 105 dB(A)
- Protection: IP 66
- Safety class II  
(no equipotential bonding necessary)
- Version dRGW 21 with integrated telephone call relay
- Integrated terminal box realized in Ex protection mode increased safety

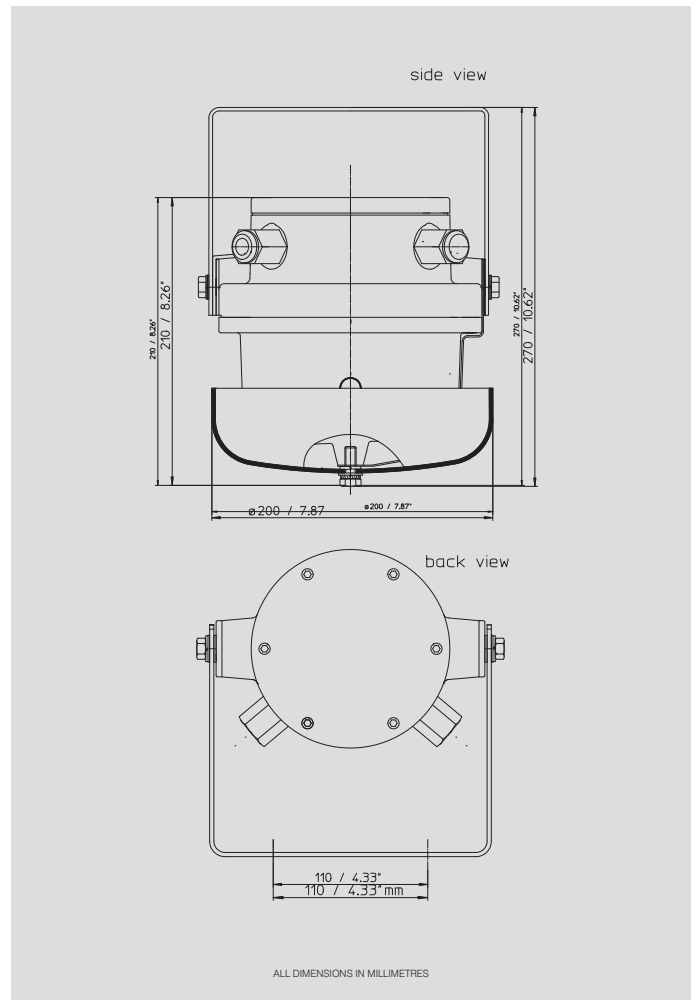
## Acoustic signalling device in a chemical plant

The frequency of the sound of the bell is approx 1kHz, meaning the signal can be clearly heard against lower frequency background noise.



# Certification and Specification

<b>Explosion Protection:</b>	II 2 G Ex de IIC T6.
<b>Protection:</b>	IP 66.
<b>Safety class:</b>	II (no equipotential bonding necessary).
<b>Housing:</b>	GRP glass-fibre reinforced polyester.
<b>Colour:</b>	Black or red.
<b>Cable gland:</b>	1x M20 x 1.5 cable gland and 1 blind plug M20 x 1.5.
<b>Connection terminals:</b>	1.5 mm <sup>2</sup> fine wire. 2.5 mm <sup>2</sup> single wire.
<b>Operating conditions:</b>	Indoors and outdoors.
<b>Operating position:</b>	Bell dome to the front (tappet downwards).
<b>Volume:</b>	Approx. 105 dB(A) at 1m distance.
<b>Operating mode:</b>	Continuous.
<b>Temperature range:</b>	
Operation:	-20°C to +40°C.
Storage:	-30°C to +80°C.
<b>Weight:</b>	Approx. 5.5 kg.



# Ordering Information

Type	Name	Voltage Ue	Oper. Volt range Ue	Current Cons	Article no.
<b>Housing black</b>					
dGW 21	Ex-Signalling Bell	12 VDC	+10/-15%	0.60 A	F910 122 10*
dGW 21	Ex-Signalling Bell	24 VDC	+10/-15%	0.35 A	F910 242 10*
dGW 21	Ex-Signalling Bell	110 VAC	+10/-15%	0.14 A	F911 101 10*
dGW 21	Ex-Signalling Bell	110 VDC	+10/-15%	0.13 A	F911 102 10*
dGW 21	Ex-Signalling Bell	230 VAC	+10/-15%	0.06 A	F912 301 10*
dGW 21	Ex-Signalling Bell	240 VAC 60 Hz	+10/-15%	0.07 A	F912 401 1060*
dRGW 21	Ex-Signalling Bell with telephone relay	230 VAC	+10/-15%	0.06 A	F912 301 1000*
<b>Housing red</b>					
dGW 21	Ex-Signalling Bell	12 VDC	+10/-15%	0.60 A	F910 122 1013*
dGW 21	Ex-Signalling Bell	24 VDC	+10/-15%	0.35 A	F910 242 1013*
dGW 21	Ex-Signalling Bell	110 VAC	+10/-15%	0.14 A	F911 101 1013*
dGW 21	Ex-Signalling Bell	110 VDC	+10/-15%	0.13 A	F911 102 1013*
dGW 21	Ex-Signalling Bell	230 VAC	+10/-15%	0.06 A	F912 301 1013*

\*All article-numbers are ATEX-variants

All specifications, dimensions, weights and tolerances are nominal (typical) and MEDC reserve the right to vary all data without prior notice. No liability is accepted for any consequence of use.

